

STANDARD DEPARTURE
CHART - INSTRUMENT
(SID) - ICAO

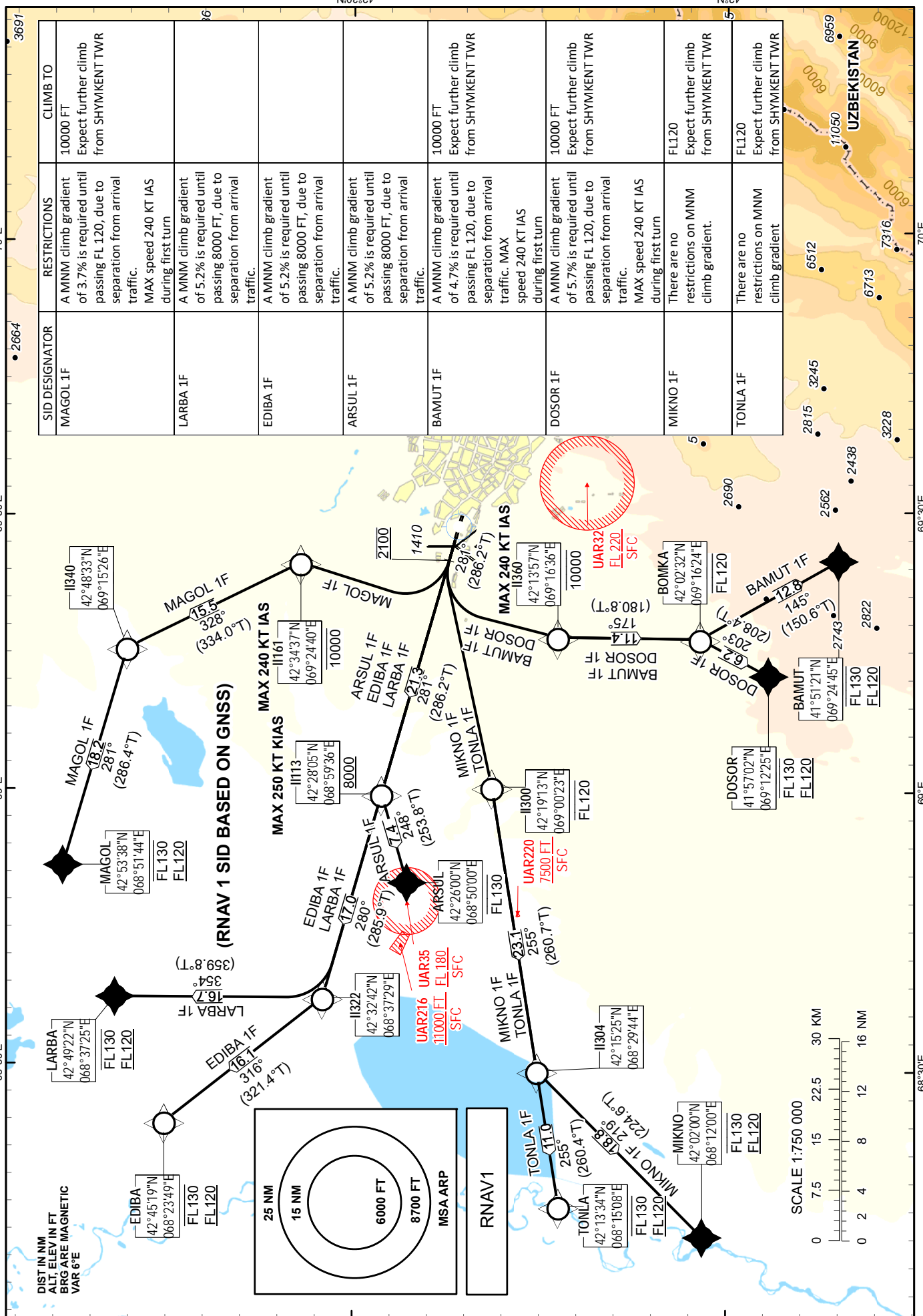
TRANSITION ALTITUDE
10000 FT

SHYMKENT TOWER 125.9
SHYMKENT ATIS (EN) 119.2
SHYMKENT ATIS (RU) 126.6

ARSUL 1F, BAMUT 1F,
DOSOR 1F, EDIBA 1F,
LARBA 1F, MAGOL 1F,
MIKNO 1F, TONLA 1F,

SHYMKENT
RWY 28

CHANGE: Editorial, BAMUT coord.



TABULAR DESCRIPTION

ARSUL 1F											
Serial Number	Path Descriptor	Waypoint Identifier	Fly - over	Course °M(°T)	Magnetic Variation(°)	Distance NM	Turn Direction	Altitude FT	Speed KT	VPA (°)	Navigation Specification
10	CF	II113	-	281(286.2)	+5.5	21.3	-	+8000	-250	-	RNAV 1
20	TF	ARSUL	-	248(253.8)	+5.5	7.4	L	-FL130	-	2.2	RNAV 1

BAMUT 1F											
Serial Number	Path Descriptor	Waypoint Identifier	Fly - over	Course °M(°T)	Magnetic Variation(°)	Distance NM	Turn Direction	Altitude FT	Speed KT	VPA (°)	Navigation Specification
10	CA	-	-	281(286.2)	+5.5	-	-	@2100	-	-	RNAV 1
20	DF	II360	-	-	+5.5	-	L	-10000	-240	-	RNAV 1
30	TF	BOMKA	-	175(180.8)	+5.5	11.4	-	-FL120	-	-	RNAV 1
40	TF	BAMUT	-	145(150.6)	+5.5	12.8	L	+FL120 - FL130	-	2.5	RNAV 1

DOSOR 1F											
Serial Number	Path Descriptor	Waypoint Identifier	Fly - over	Course °M(°T)	Magnetic Variation(°)	Distance NM	Turn Direction	Altitude FT	Speed KT	VPA (°)	Navigation Specification
10	CA	-	-	281(286.2)	+5.5	-	-	@2100	-	-	RNAV 1
20	DF	II360	-	-	+5.5	-	L	-10000	-240	-	RNAV 1
30	TF	BOMKA	-	175(180.8)	+5.5	11.4	-	-FL120	-	-	RNAV 1
40	TF	DOSOR	-	203(208.4)	+5.5	6.2	R	+FL120 - FL130	-	3	RNAV 1

EDIBA 1F											
Serial Number	Path Descriptor	Waypoint Identifier	Fly - over	Course °M(°T)	Magnetic Variation(°)	Distance NM	Turn Direction	Altitude FT	Speed KT	VPA (°)	Navigation Specification
10	CF	II113	-	281(286.2)	+5.5	21.3	-	+8000	-250	-	RNAV 1
20	TF	II322	-	280(285.9)	+5.5	17.0	-	-	-	-	RNAV 1
30	TF	EDIBA	-	316(321.4)	+5.5	16.1	R	+FL120 -FL130	-	1.9	RNAV 1

LARBA 1F											
Serial Number	Path Descriptor	Waypoint Identifier	Fly - over	Course °M(°T)	Magnetic Variation(°)	Distance NM	Turn Direction	Altitude FT	Speed KT	VPA (°)	Navigation Specification
10	CF	II113	-	281(286.2)	+5.5	21.3	-	+8000	-250	-	RNAV 1
20	TF	II322	-	280(285.9)	+5.5	17.0	-	-	-	-	RNAV 1
30	TF	LARBA	-	354(359.8)	+5.5	16.7	R	+FL120 -FL130	-	1.9	RNAV 1

MAGOL 1F											
Serial Number	Path Descriptor	Waypoint Identifier	Fly - over	Course °M(°T)	Magnetic Variation(°)	Distance NM	Turn Direction	Altitude FT	Speed KT	VPA (°)	Navigation Specification
10	CA	-	-	281(286.2)	+5.5	-	-	@2100	-	-	RNAV 1
20	DF	II161	-	-	+5.5	-	R	-10000	-240	-	RNAV 1
30	TF	II340	-	328(334.0)	+5.5	15.5	L	-	-	3.2	RNAV 1
40	TF	MAGOL	-	281(286.4)	+5.5	18.2	L	+FL120 -FL130	-	-	RNAV 1

MIKNO 1F											
Serial Number	Path Descriptor	Waypoint Identifier	Fly - over	Course °M(°T)	Magnetic Variation(°)	Distance NM	Turn Direction	Altitude FT	Speed KT	VPA (°)	Navigation Specification
10	CA	-	-	281(286.2)	+5.5	-	-	@2100	-	-	RNAV 1
20	DF	II300	-	-	+5.5	-	L	-FL120	-	-	RNAV 1
30	TF	II304	-	255(260.7)	+5.5	23.1	-	-	-	-	RNAV 1
40	TF	MIKNO	-	219(224.6)	+5.5	18.8	L	+FL120 -FL130	-	-	RNAV 1

TONLA 1F											
Serial Number	Path Descriptor	Waypoint Identifier	Fly - over	Course °M(°T)	Magnetic Variation(°)	Distance NM	Turn Direction	Altitude FT	Speed KT	VPA (°)	Navigation Specification
10	CA	-	-	281(286.2)	+5.5	-	-	@2100	-	-	RNAV 1
20	DF	II300	-	-	+5.5	-	L	-FL120	-	-	RNAV 1
30	TF	II304	-	255(260.7)	+5.5	23.1	-	-	-	-	RNAV 1
40	TF	TONLA	-	255(260.4)	+5.5	11.0	-	+FL120 -FL130	-	1.8	RNAV 1

WAYPOINT LIST

WPT	COORD	
ARSUL	422600.00N	0685000.00E
BAMUT	415121.00N	0692445.00E
DEP	422210.61N	0692715.98E
DOSOR	415702.00N	0691225.00E
EDIBA	424519.00N	0682349.00E
II113	422804.71N	0685935.76E
II161	423436.62N	0692440.23E
II300	421913.11N	0690022.67E
II304	421525.47N	0682943.81E
II322	423242.18N	0683728.71E
II340	424832.71N	0691526.16E
II360	421357.17N	0691636.26E
LARBA	424922.00N	0683725.00E
MAGOL	425338.00N	0685144.00E
MIKNO	420200.00N	0681200.00E
TONLA	421334.00N	0681508.00E